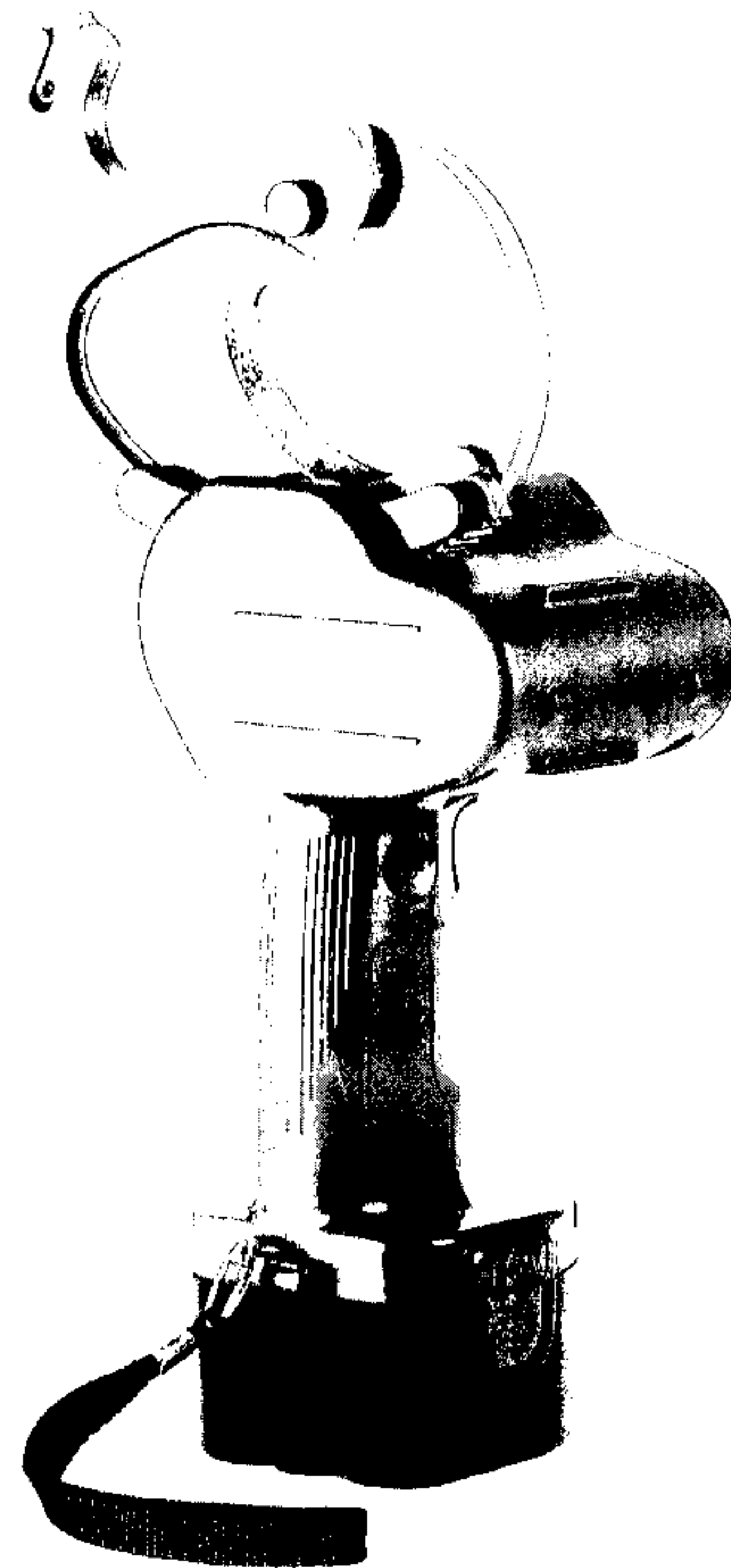


Safe Operation & Maintenance Instructions**Rechargeable Cable Cutter****REC-50/ 54/ 54AC/ 65/ 85CCP**

Version: 2008/04

Professional Rechargeable Cable Cutters are carefully inspected for quality and tested for safety. We follow ISO 9001: 2000/ ISO 14001: 2004/ IECQ QC 080001/ OHSAS 18001: 2007 & REC-50 is passed CE Standards

ATTENTION!

Safe Operation & Maintenance Instructions must be followed.





Table of Contents

- Table of Contents.....1
- Safety Instructions.....2
- Product Description.....5
- Battery Specification.....10
- Maintenance11
- Operating Instructions.....12
- Battery Charging.....14
- Changing Blade.....15
- Trouble-Shooting.....16
- Limited Lifetime Warranty.....17
- Diagram of Components (REC-50).....19
- Table of Components (REC-50).....20
- Diagram of Components (REC-54/54AC/65/85CCP).....21
- Table of Components (REC-54/54AC/65/85CCP).....22
- Manufacture & Quality Certificate

Thank you for using **our** products. This manual must be read carefully prior to operating this product. Special attention should be paid to the section "Safety Instructions". Damages and injuries caused by improper use of this product are **NOT** included in our warranty. We would like to remind you to work safely and to keep this manual on hand.

Safety Instructions

- Follow ALL instructions to ensure safety.

WARNING	
	This product is NOT an insulator and cannot be used near energized conductors.
	Do not use this tool on glass, plastic, wood or any other materials which could shatter. Do not exceed equipment ratings.
ATTENTION	
	Always wear safety goggles when operating this product. Projectiles or hydraulic fluid can cause serious injuries.
	Read all instructions, warnings, and cautions carefully. Follow all safety precautions to avoid personal injury or property damage.

Safety Instructions

Work Area Safety

1. Keep the area around the tool clean and free of obstructions.
2. Keep the area free of flammables which could ignite while using this tool.
3. Children and bystanders should stay clear of the work area to ensure safety

Electrical Safety

1. Use only the specified battery charger for the battery.
2. Use only the designated battery pack with this tool.
3. Do not modify the charger in any way. Ensure the charger matches the electrical outlet.
4. Avoid electrical shock. Do not touch grounded metal conductors while operating this tool.
5. Do not use this tool in wet conditions. Store this tool in a dry place.
6. Do not drop or in any way abuse or disassemble the battery pack or charger.

Personal Safety

1. Stay alert while using this tool to prevent serious injury. Do not use under the influence of drugs, alcohol or medicine.
2. Do not wear loose hair or clothes that can get caught in the tool while operating.
3. To reduce the risk of injury, wear non-conductive gloves and non-skid safety-shoes. Always wear protective eyewear.
4. Make sure the tool switch is OFF or the tool locked before inserting the battery pack.
5. After servicing the tool, remove adjusting keys or wrenches from any moving parts of the tool before use.
6. Work safely. Maintain your balance and do not reach while operating the tool.

Tool Use and Care

1. If the work piece is unstable do not attempt to cut it by yourself. Get assistance or use clamps to secure the work piece.
2. Ensure the cutting material is not over-specification. You may damage the tool if you do not follow the operating instructions.
3. Do not use the tool if there are any abnormalities or damage to any of its components.
4. Turn the tool OFF and remove the battery pack before servicing or storing the tool.
5. Keep out of the reach of children. All users should be familiar with its use before operating.
6. Store the battery away from materials which may short the battery and cause a hazard.
7. Inspect the tool blade before and after every use. Do not use this tool if the blade is worn or damaged.
8. Personal injury can be caused by operating poorly maintained tools. Check for loose parts or misaligned blades.
9. Use only Kudos recommended accessories with this power tool.

Service

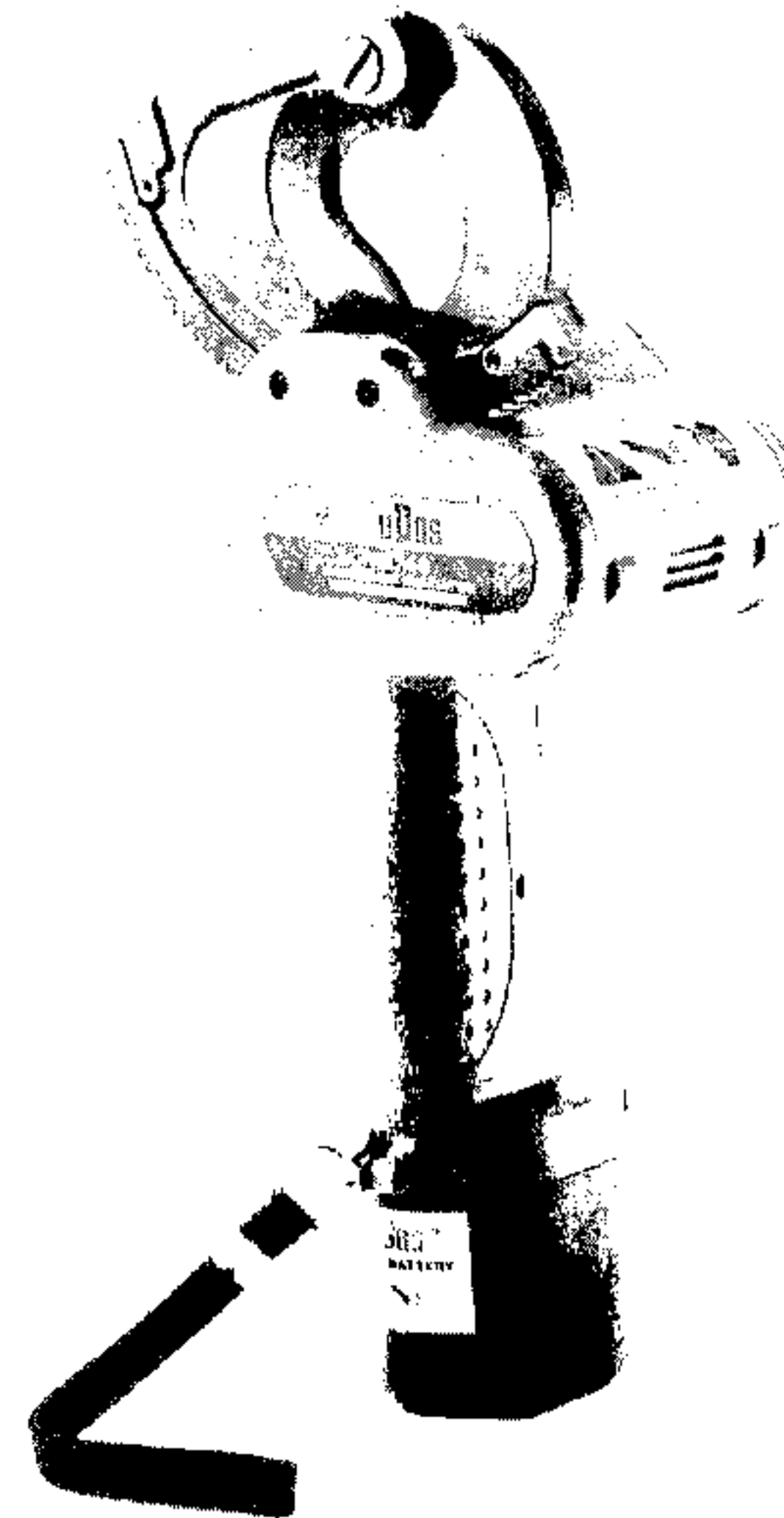
1. This tool must be repaired by qualified technicians. Please contact your representative.
2. Do not attempt to repair or disassemble this tool.
3. When having the tool serviced, always use identical replacement parts.

Product Description: REC-50



■ Specifications:

- Size: 105mm(L)x190mm(W)x370mm(H)
- Weight: 2.5 kgs (including battery)
- Drive unit: 12V DC Motor
- Charger (GS/CE):
- Input voltage: **REC-50-120**
120V Single Phase AC
- Input voltage: **REC-50-230**
230V Single Phase AC
- input frequency: 50-60 Hz
- Input current: 21.75 VA
- Sound Pressure Level: 77.7dB (A)**
- Sound Power Level: 88.7dB (A)**
- Vibration: 3.34 m/s²**



■ Cutting Capacity: (Max. Cable diameter)

- Nonferrous 50 mm

■ Accessories:

- plastic carrying case
- 12V Battery, 110V or 230V Charger

Material	Specification	# of cuts
Polyethylene cable	600V-CV325 mm ² (31 mm OD)	142
	600V-CV150 mm ² x 3 (46 mm OD)	75
	600V-CV500 mm ² (38 mm OD)	60
	6KV-CVT500 mm ² (45 mm OD)	45
Multi-core vinyl insulation cable	VVR150 mm ² (47 mm OD) 3 core	75
Soft copper cable	IV500 mm ² (35 mm OD)	75
Hard copper cable	150 mm ² (21 mm OD)	240

Product Description: REC-54

■ Specifications:

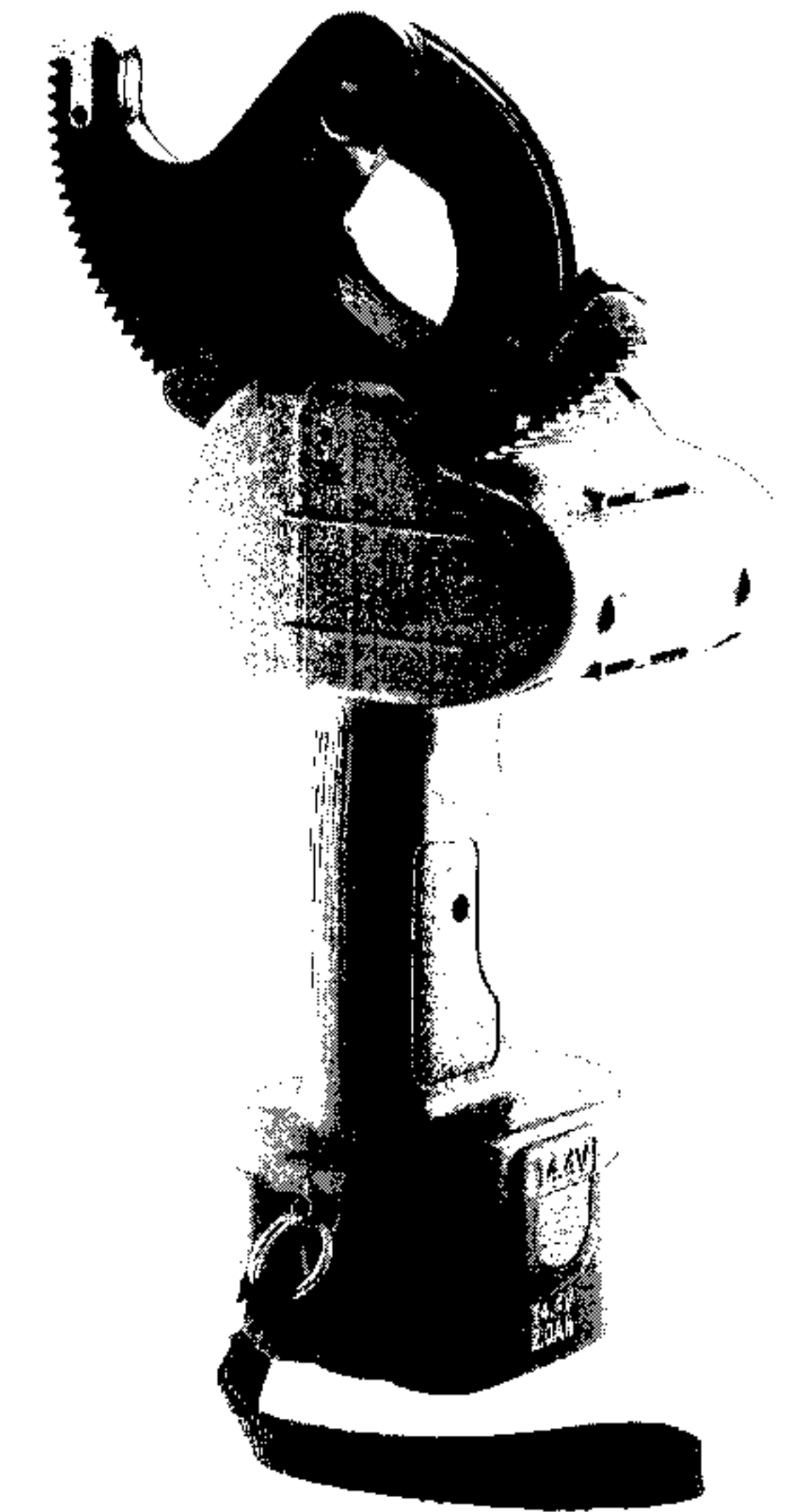
- Height: 360 (H)mm
- Weight: 4.0 kg (including battery)
- Drive unit: 14.4V DC Motor
- Charger (GS/CE):
- Input voltage: **REC-54-120**
120V Single Phase AC
- Input voltage: **REC-54-230**
230V Single Phase AC
- Input frequency: 50-60 Hz
- Input current: 21.75 VA

■ Cutting Capacity: (Max. Cable diameter)

- Nonferrous 54mm
- Steel supported 400-pair telecom cable

■ Accessories:

- plastic carrying case
- 14.4V Battery, 110V or 230V Charger



Material	Specification	# of cuts
Polyethylene cable	600V-CV325 mm ² (31 mm OD)	90
Multi-core vinyl insulation cable	VVR150 mm ² (47 mm OD) 3 core	45
SB-ACSR	ACSR120 mm ² (18.6 mm OD)	142
Hard aluminum cable	HAL-OC400 mm ² (31.9mm OD)	120
Hard copper cable	OE-OC150 mm ² (21 mm OD)	165
SS cable	0.4 mm 400 CCP-F-SS(CR) cable	142
LCCP cable without support wire	54 mm outer diameter	187

Product Description: REC-54AC

■ Specifications:

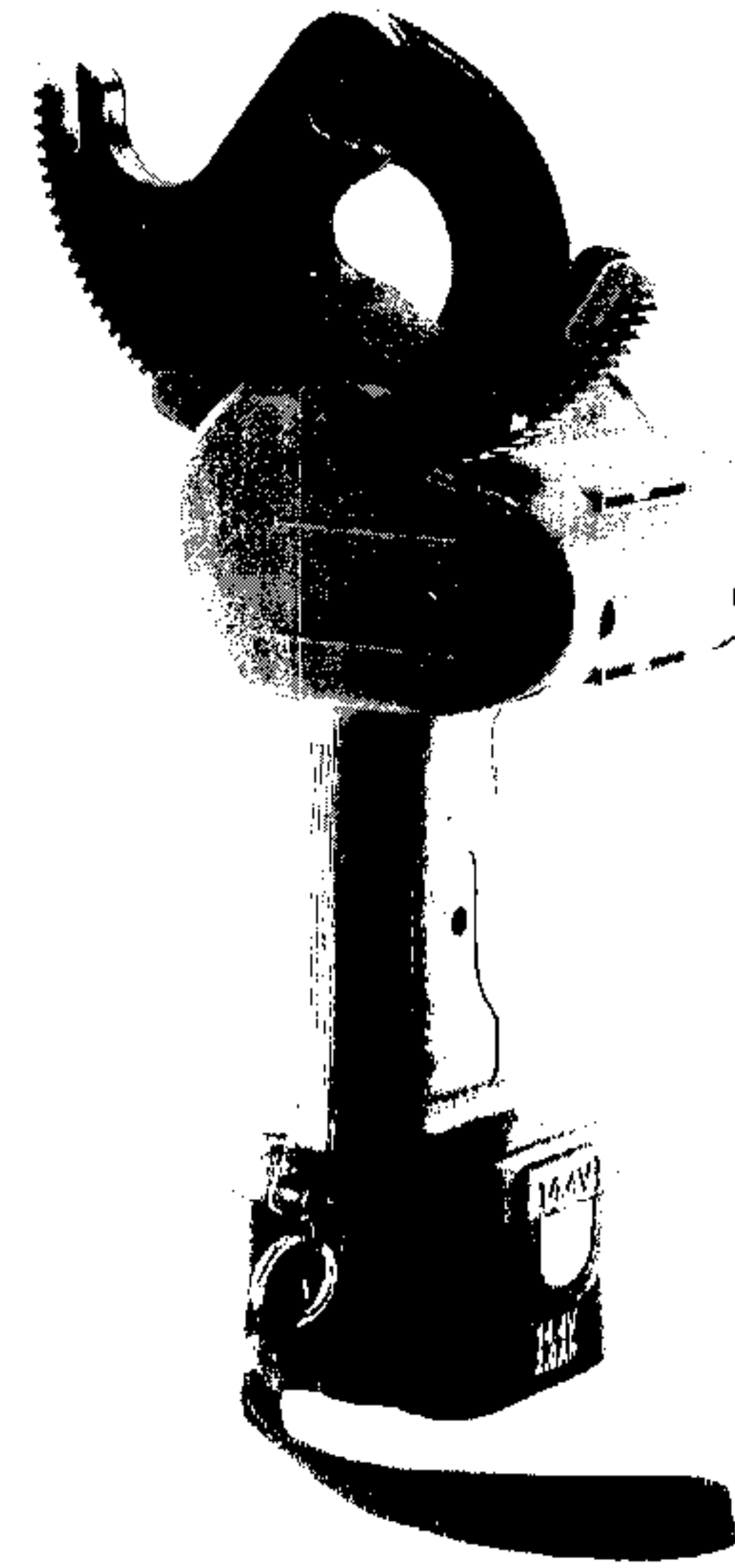
Height: 360 (H) mm
 Weight: 4.0 kg (including battery)
 Drive unit: 14.4V DC Motor
 Charger (GS/CE):
 Input voltage: **REC-54-120**
 120V Single Phase AC
 Input voltage: **REC-54-230**
 230V Single Phase AC
 Input frequency: 50-60 Hz
 Input current: 21.75 VA

■ Cutting Capacity: (Max. Cable diameter)

- Nonferrous 54mm

■ Accessories:

- plastic carrying case
- 14.4V Battery, 110V or 230V Charger



Material	Specification	# of cuts
Polyethylene cable	600V-CV325 mm ² (31 mm OD)	142
	600V-CV150 mm ² (46 mm OD) 3 core	75
	600V-CV500 mm ² (38 mm OD)	60
	6KV-CVT500 mm ² (45 mm OD)	45
Multi-core vinyl insulation cable	VVR150 mm ² (47 mm OD) 3 core	75
Soft copper cable	IV500 mm ² (35 mm OD)	75
Hard copper cable	150 mm ² (21 mm OD)	225

Product Description: REC-65

■ Specifications:

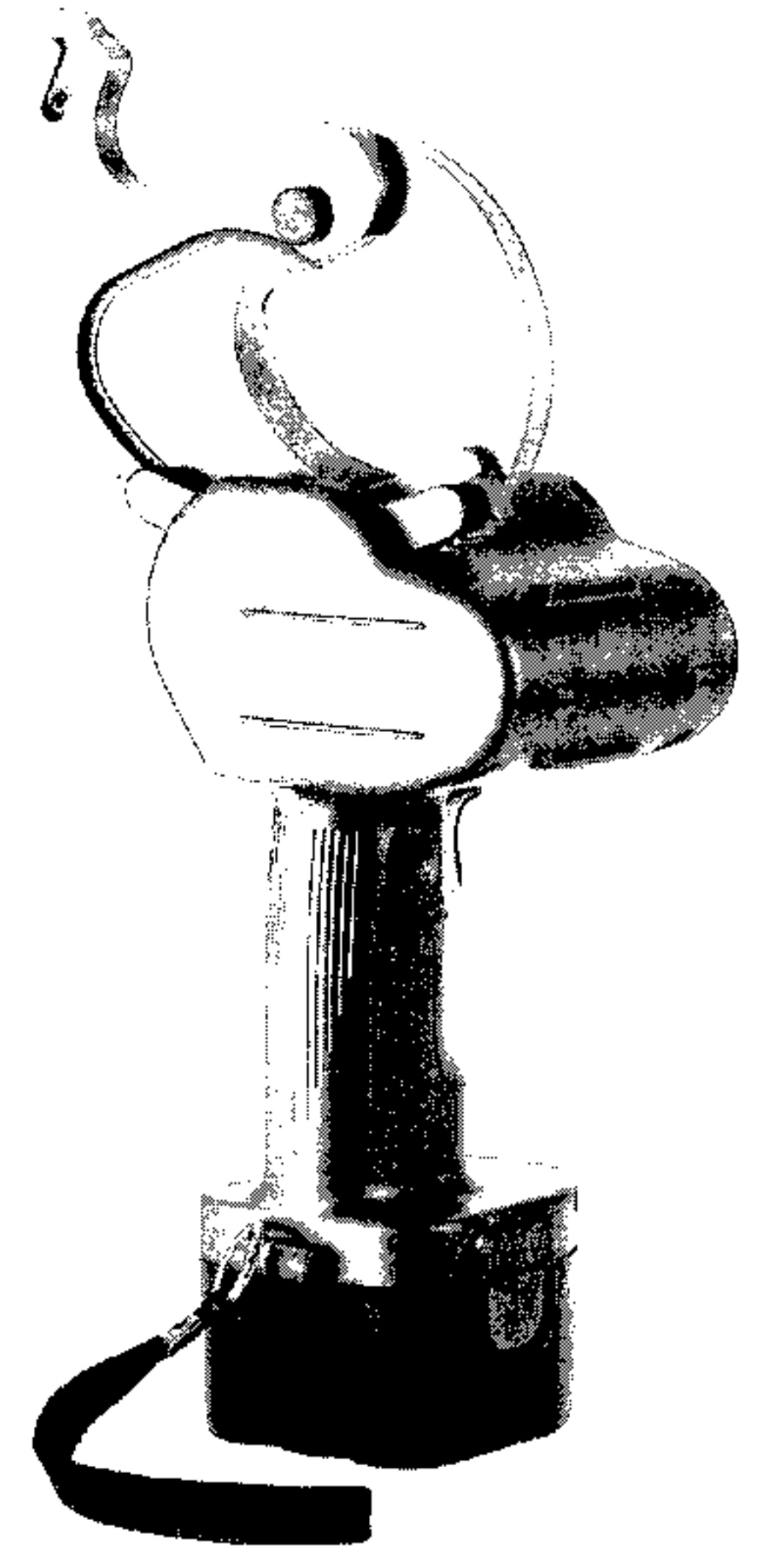
Height: 360 (H)mm
 Weight: 4.0 kg (including battery)
 Drive unit: 14.4V DC Motor
 Charger (GS/CE):
 Input voltage: **REC-65-120**
 120V Single Phase AC
 Input voltage: **REC-65-230**
 230V Single Phase AC
 Input frequency: 50-60 Hz
 Input current: 21.75 VA

■ Cutting Capacity: (Max. Cable diameter)

- Nonferrous 65mm

■ Accessories:

- plastic carrying case.
- 14.4V Battery, 110V or 230V Charger.

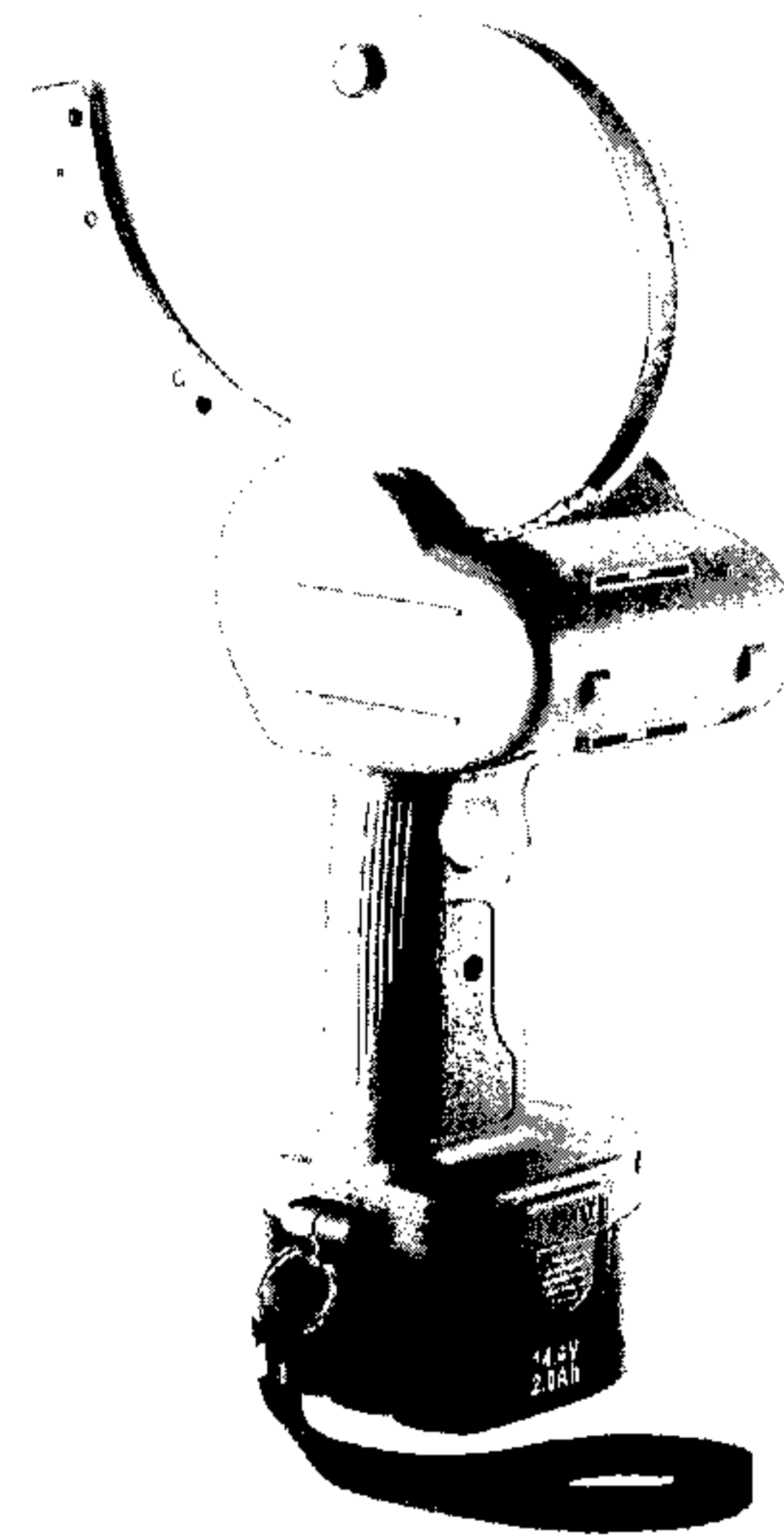


Material	Specification	# of cuts
Polyethylene cable	600V-CV325 mm ² (31 mm OD)	142
	600V-CV150 mm ² (46 mm OD) 3 core	75
	600V-CV500 mm ² (38 mm OD)	60
	6KV-CVT500 mm ² (45 mm OD)	45
Multi-core vinyl insulation cable	VVR150 mm ² (47 mm OD) 3 core	75
Soft copper cable	IV500 mm ² (35 mm OD)	75
Hard copper cable	150 mm ² (21 mm OD)	225

Product Description: REC-85CCP

■ Specifications:

- Height: 360 (H)mm
- Weight: 4.0 kg (including battery)
- Drive unit: 14.4V DC Motor
- Charger (GS/CE):
REC-85CCP-120
 Input voltage: 120V Single Phase AC
REC-85CCP-230
 Input voltage: 230V Single Phase AC
 Input frequency: 50-60 Hz
 Input current: 21.75 VA



■ Cutting Capacity: (Max. Cable diameter)

- CCP cable 85mm

■ Accessories:

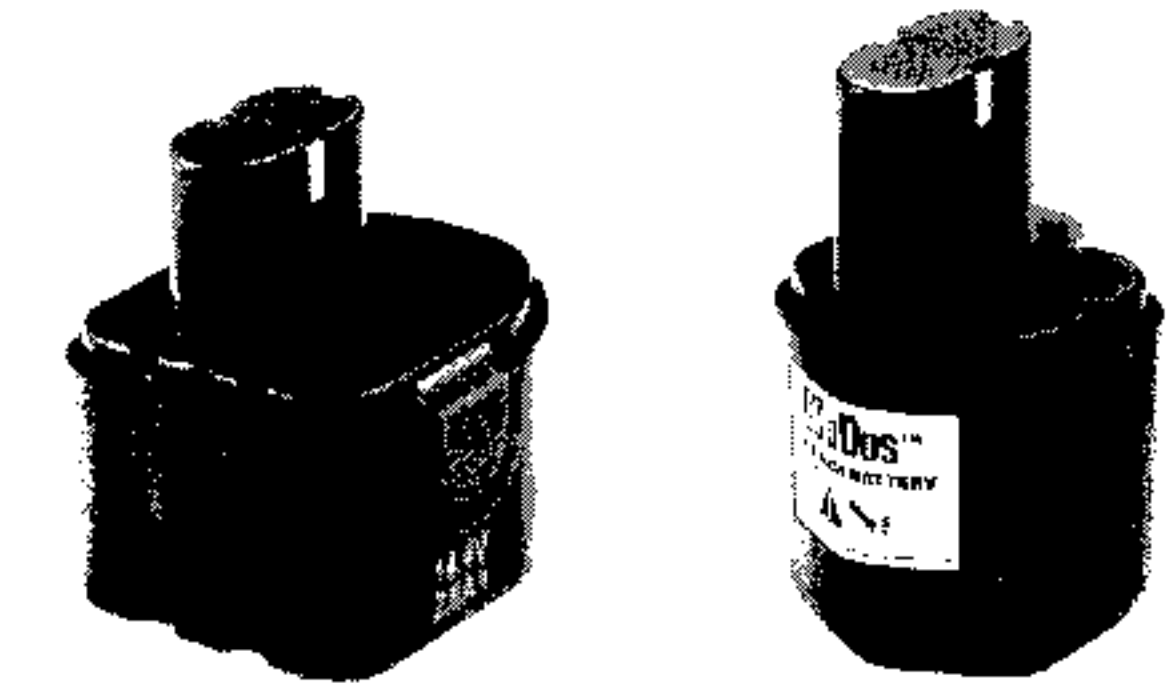
- plastic carrying case.
- 14.4V Battery, 110V or 230V Charger.

Material	Specification	# of cuts
CCP cable	40-50 mm	225
	50-60 mm	210
	60-70 mm	165
	70-80 mm	120

Battery Specifications

Model No. BAT-12V

- Type: Rechargeable nickel-cadmium
- Output Voltage: 12V
- Input Frequency: 50-60 Hz
- Capacity: 1.2 Ah



Model No. BAT-14.4V

- Type: Rechargeable nickel-cadmium
- Output Voltage: 14.4V
- Input Frequency: 50-60 Hz
- Capacity: 2.0 Ah

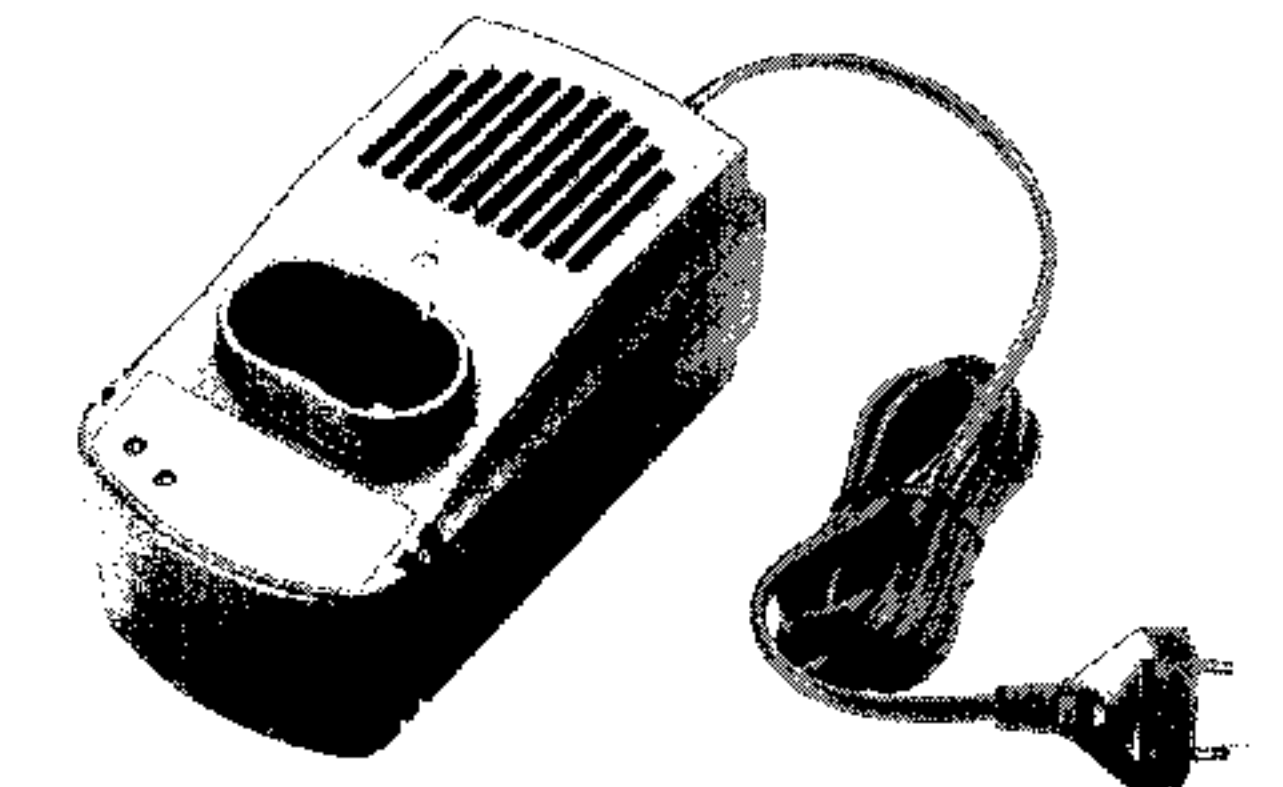
Charger Specifications

Model No. ABC-10A

- Input Voltage: 115VAC 50-60 Hz 40W
- Output: 15VDC 1.5A

Model No. AD-B735

- Input Voltage: 120VAC 50-60 Hz 40W
- Output: 18VDC 1.5A

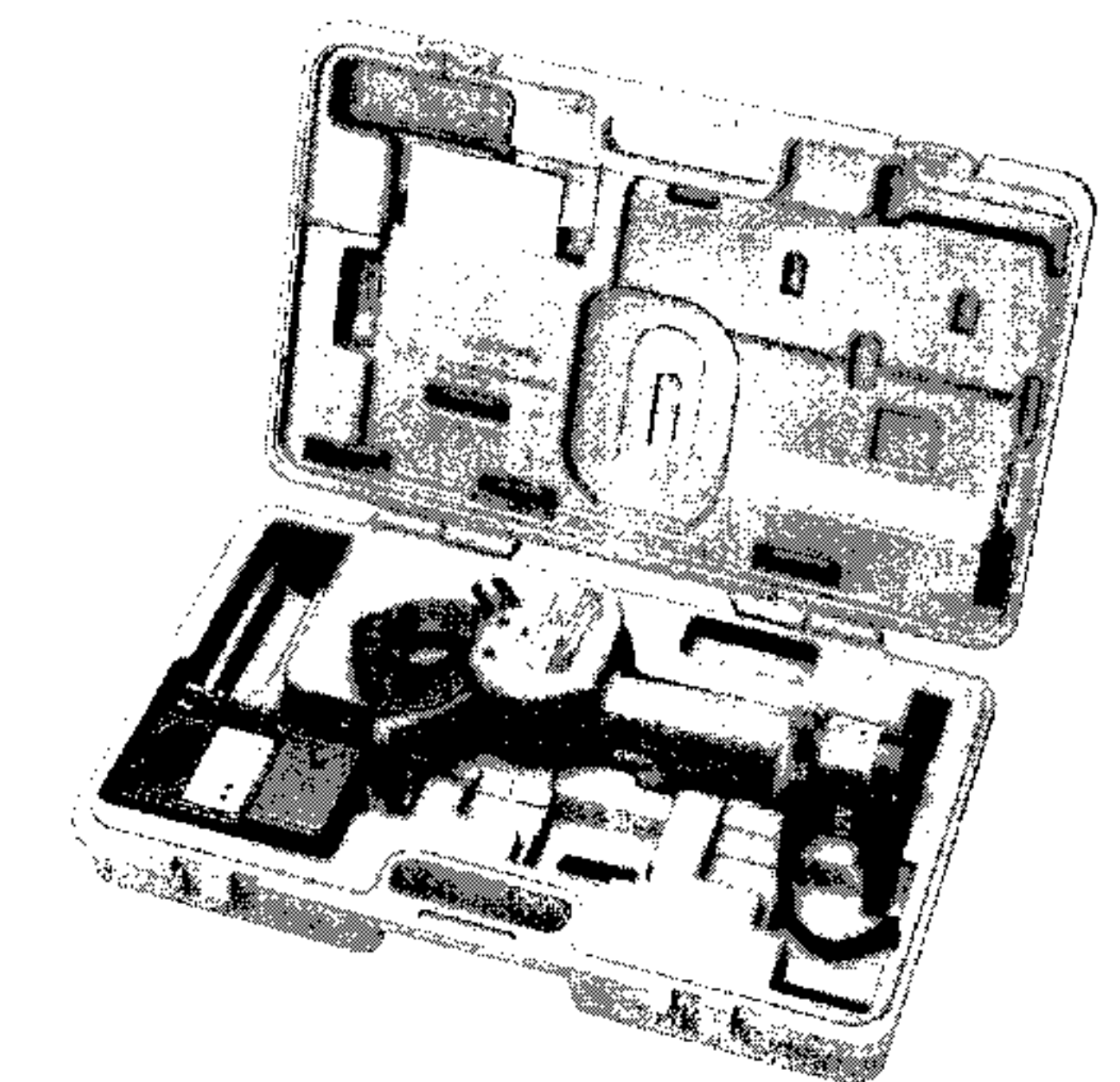


Model No. ABC-10B

- Input Voltage: 230VAC 50-60 Hz 40W
- Output: 15VDC 1.5A

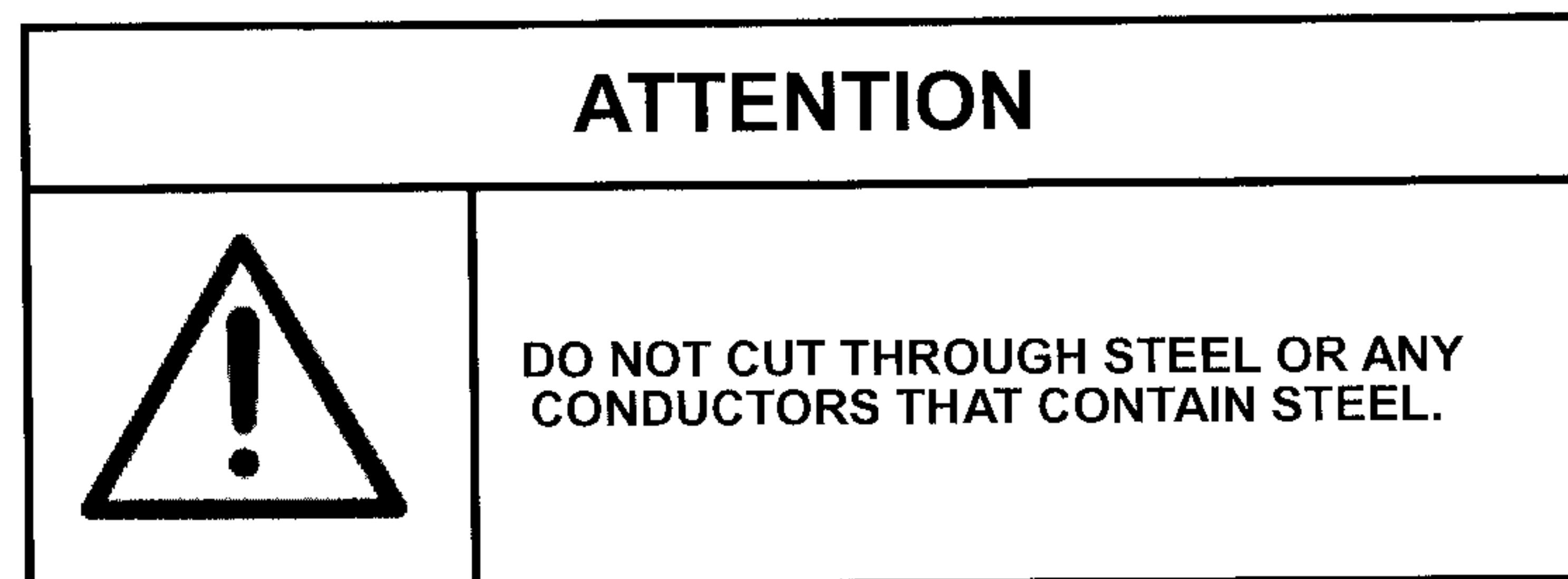
Model No. AD-B734

- Input Voltage: 230VAC 50-60 Hz 40W
- Output: 18VDC 1.5A



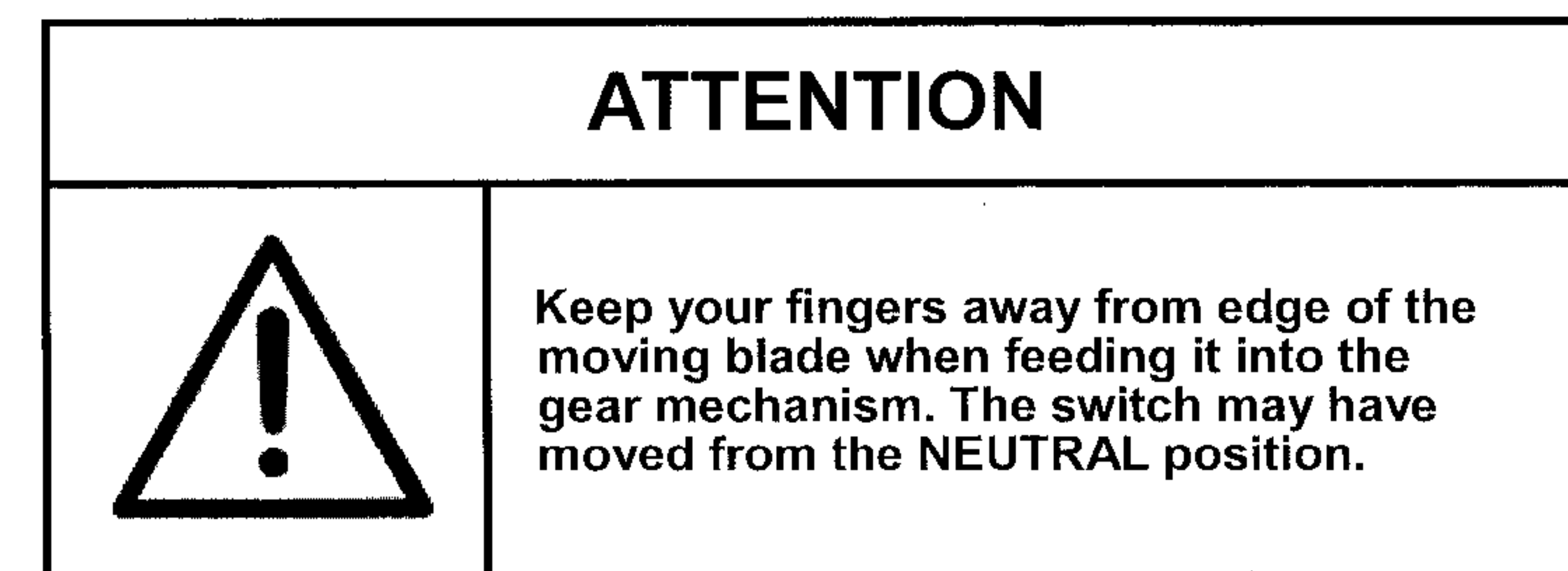
Maintenance

- After use, look for burrs or dents in the blade. If burrs exist they can be removed with a flat grinding stone. Clean, sharp blades will provide better and safer performance and put less strain on the tool.
- The plastic housing can be kept clean with a soft soap cloth. Use a lubricant to clean the blades if necessary.
- Keep the handle dry and free of grease at all times.
- Do **NOT** let the tool drop to the ground or into the carrying case to avoid damage to internal parts or to the plastic housing.
- Store in a cool, dry area. Do **NOT** keep this product in places with high temperatures, high humidity, or direct sunlight.
- Inform us authorized distributors in case of any abnormalities or malfunctions of the product.
- **DO NOT DISASSEMBLE OR ATTEMPT TO REPAIR THIS TOOL.**
Disassembly of this tool beyond changing the moving blade and gear guides will void the warranty.



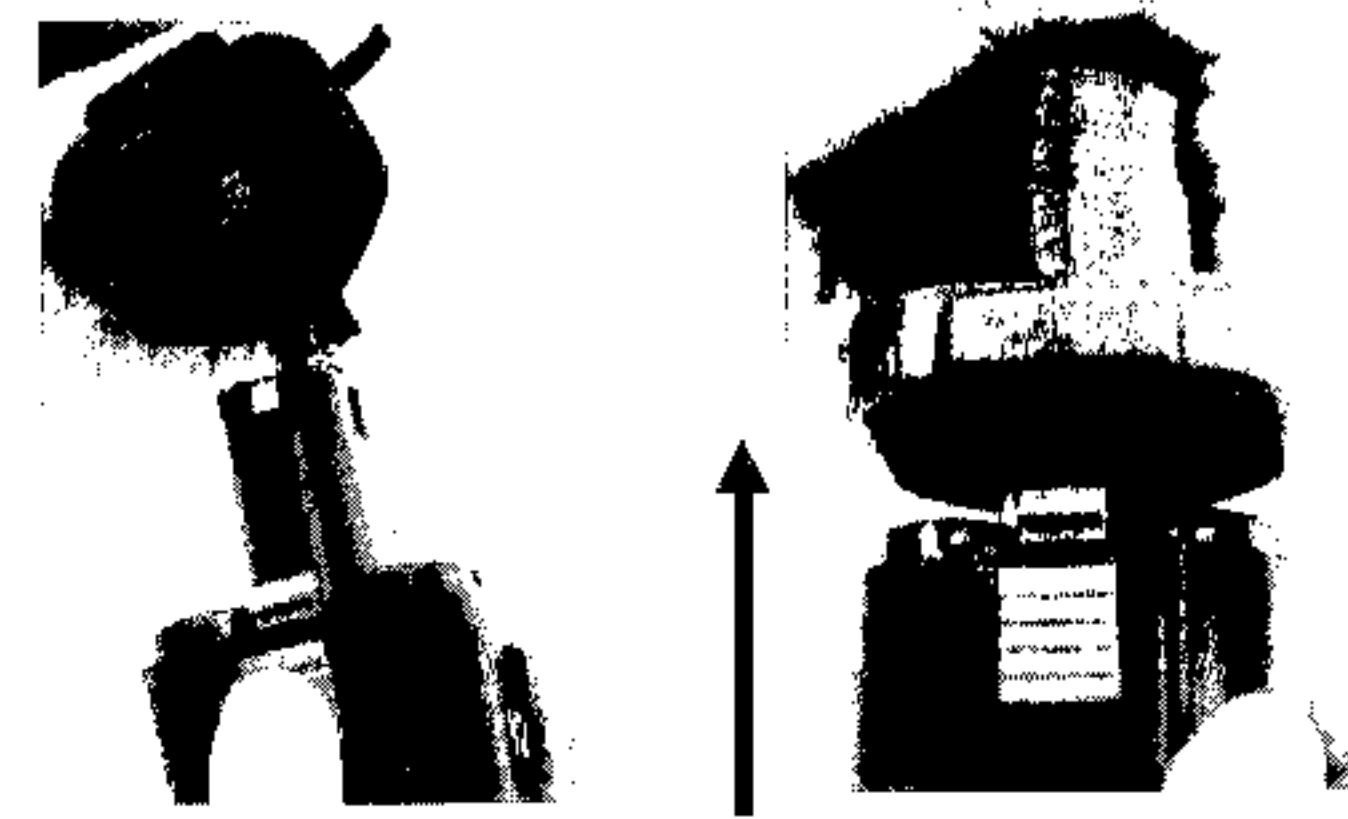
Operating Instructions

5. Put the switch to F (Forward) and press the tool trigger to cut the cable. Make sure the cable is at a 90° angle to the fixed blade when the blade makes contact. Press the tool trigger until the cable is completely cut.
6. If a series of partial cuts are necessary, or more cuts to the same section of cable, put the tool switch to R (Reverse) position and press the trigger to back off the cable. Reposition the cable and repeat steps 4 & 5.
7. To repeat the operation on another running cable, repeat step 3-5.
8. When the tool is sitting idly or once you are finished with it, put the tool switch in the central N (Neutral) position.
9. To release the battery, press the battery latch on the battery and slide the battery out of the tool.
10. Before placing the tool back in its carrying case, check that there are no loose or broken pieces, the tool blade is not burred or bent and properly aligned. Remove any particles which may be in the blade brushes. Ensure that the housing is clean.

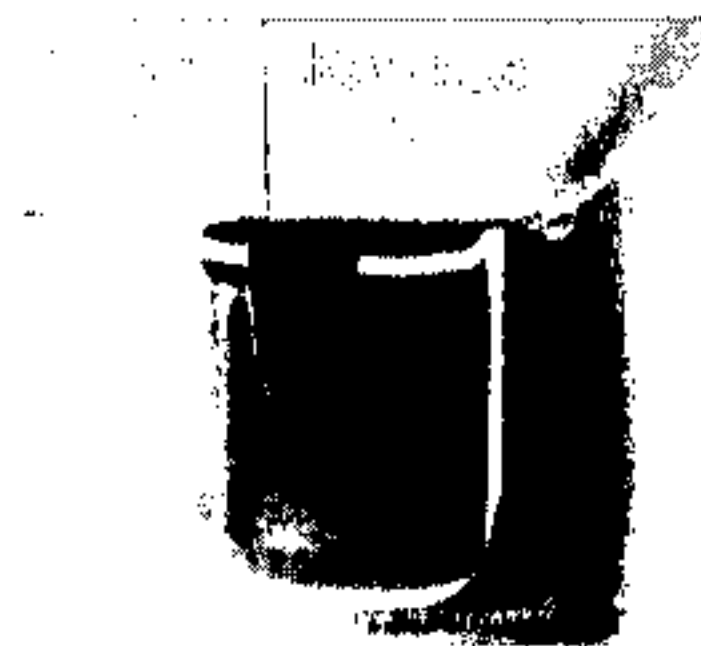


Operating Instructions

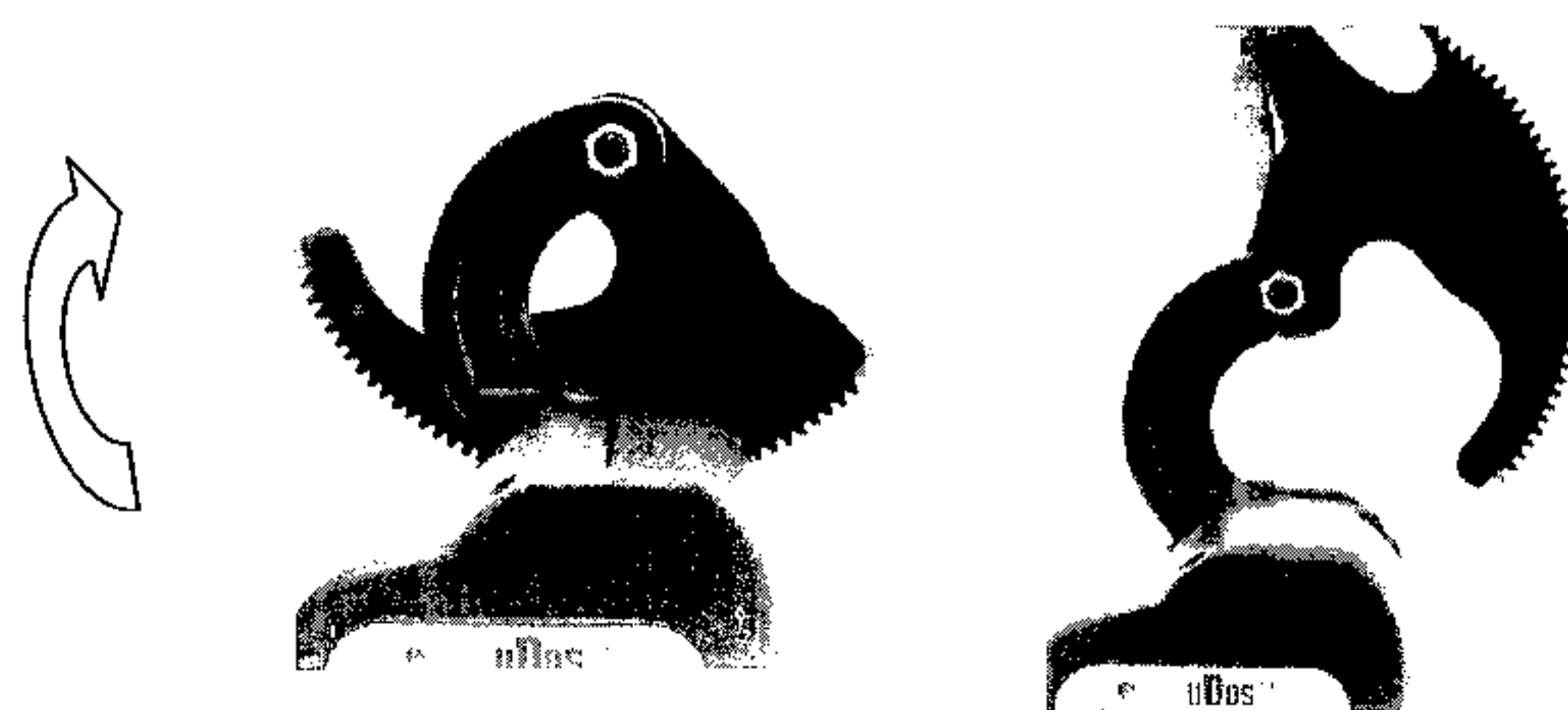
1. Install the charged battery by sliding it into the base of the tool handle until it clicks into place. The battery should be secured and unmoveable.



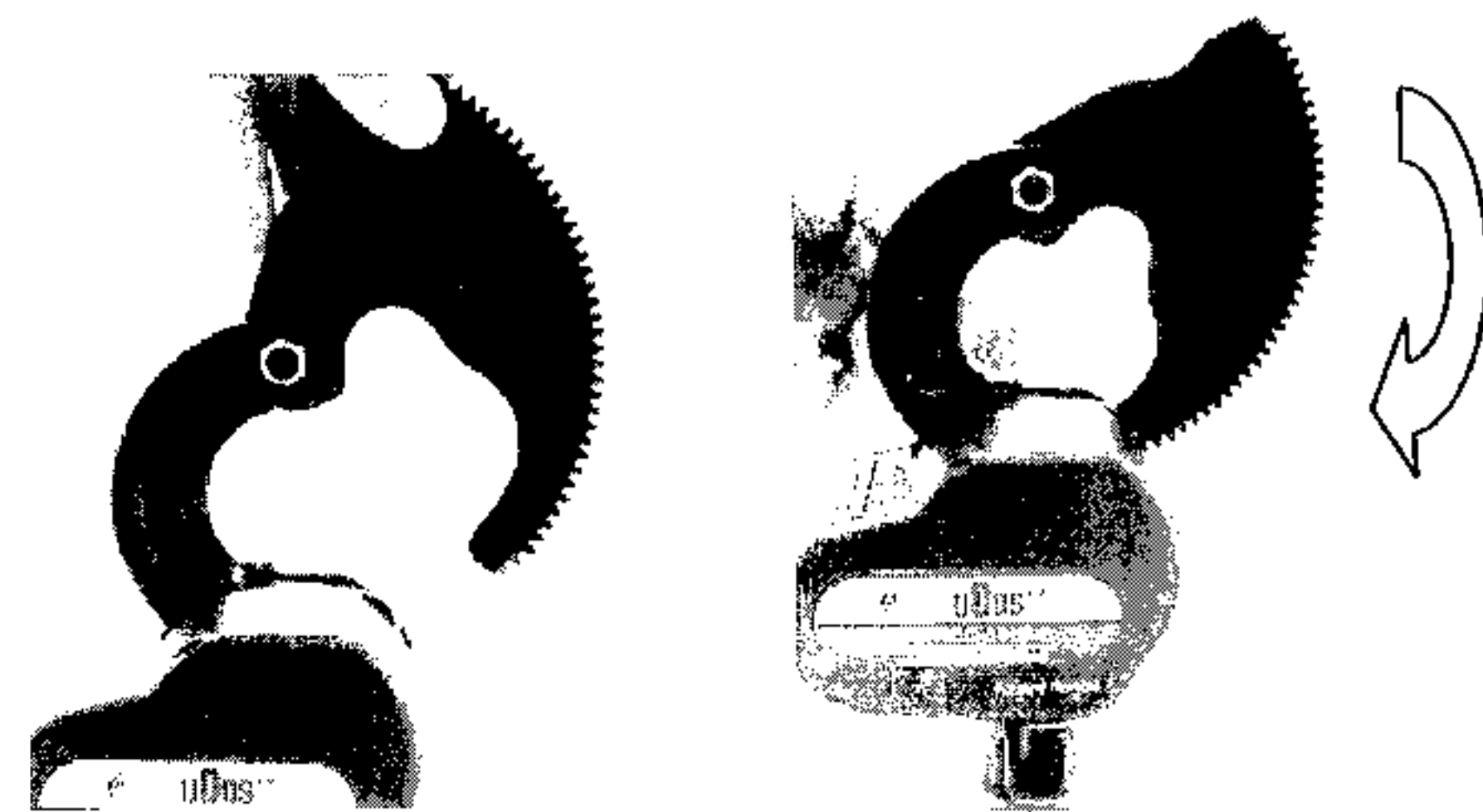
2. Take a look at the operation of tool switch system. There are 3 settings: F (Forward), N (Neutral), R (Reverse). When the tool is not in use or is idle, it should rest in the N or central position.



3. Operate the cutter forwards or backwards until the moving blade disengages from the pinion gear and can be pulled free (#9).



4. Place the cable against the fixed blade. Engage the moving blade gear teeth to the tool drive mechanism.



Battery Charging

1. After removing the battery from the power tool, insert it into the battery charger. The red indicator will light up and indicate the battery is charging.
2. The green light comes on after approx. one hour, indicating the battery is charged to 80%. For the battery to reach 100% it will take over 12 hours of charging after the green light has come on.
3. Remove the battery from the charger and install into the handle of the power tool sliding it into the base of the tool handle until it clicks into place. The battery should be secured and unmoveable.
4. The charger will not operate effectively if overheated. Allow 10 minutes to cool down between charges if charging consecutive batteries.

ATTENTION	
	<p>DO NOT dispose of this battery in a fire or otherwise abuse the battery.</p> <p>DO NOT short circuit battery output terminals</p> <p>DO NOT disassemble or modify the battery. This may lead to short circuiting the battery cells causing personal injury or damage to the battery.</p>

Blade Replacement

1. Operate the cutter forwards or backwards until the moving blade disengages from the pinion gear and can be pulled free (#9).
2. Put the power switch in the central or 'N' position. Remove the battery from the cutter.
3. Secure the lock nut with a wrench and loosen the shoulder screw with a flat screwdriver. Remove the moveable blade from the tool and collect the two curved washers.
4. Use a M2.5-sized Allen wrench to loosen and remove the two screws which secure each of the orange gear guides to the moveable blade. Install the gear guides on the new blade. Screw them into place firmly, with the lock-washer between the screw head and the gear guide.
5. Install the new moving blade and assemble the shoulder screw. Position the two curved washers between the shoulder screw head and moving blade. Hold the lock nut with the wrench and tighten the shoulder screw.
6. Reinstall the battery pack. Feed the the moving blade into the gear mechanism. Test the new blade movement. If necessary, repeat the procedure from Step 1.

Guide Replacement

1. Operate the cutter either forwards or backwards until the moving blade disengages from the pinion gear and can be pulled free.
2. Put the power switch in the central or 'N' position. Remove the battery from the cutter.
3. Use a M2.5-sized Allen wrench to loosen and remove the screw which secures the gear guide to the moving blade. Install the replacement guide and tighten the screw. Repeat to replace the second gear guide.
4. Reinstall the battery pack. Feed the the moving blade into the gear mechanism. Test the new blade movement. If necessary, repeat the procedure from Step 1.

Trouble - Shooting

■ The Cable cannot be cut:

- A. Tool Blades are worn or damaged. The blades must be replaced. Tools with worn or damaged blades might cause property damage or even personal injuries.
- B. Applied cable is over-specification. Please check the specification table. The circuit breaker will need to be reset.
- C. The blade might be deformed by uneven distribution after cutting an off-center cable.

■ Charging Lamp does not light up:

- A. Dust, etc. has entered the battery cartridge. Clean the battery to remove any obstructions.
- B. Battery cartridge is overheating. Allow the cartridge to cool before conditioning.

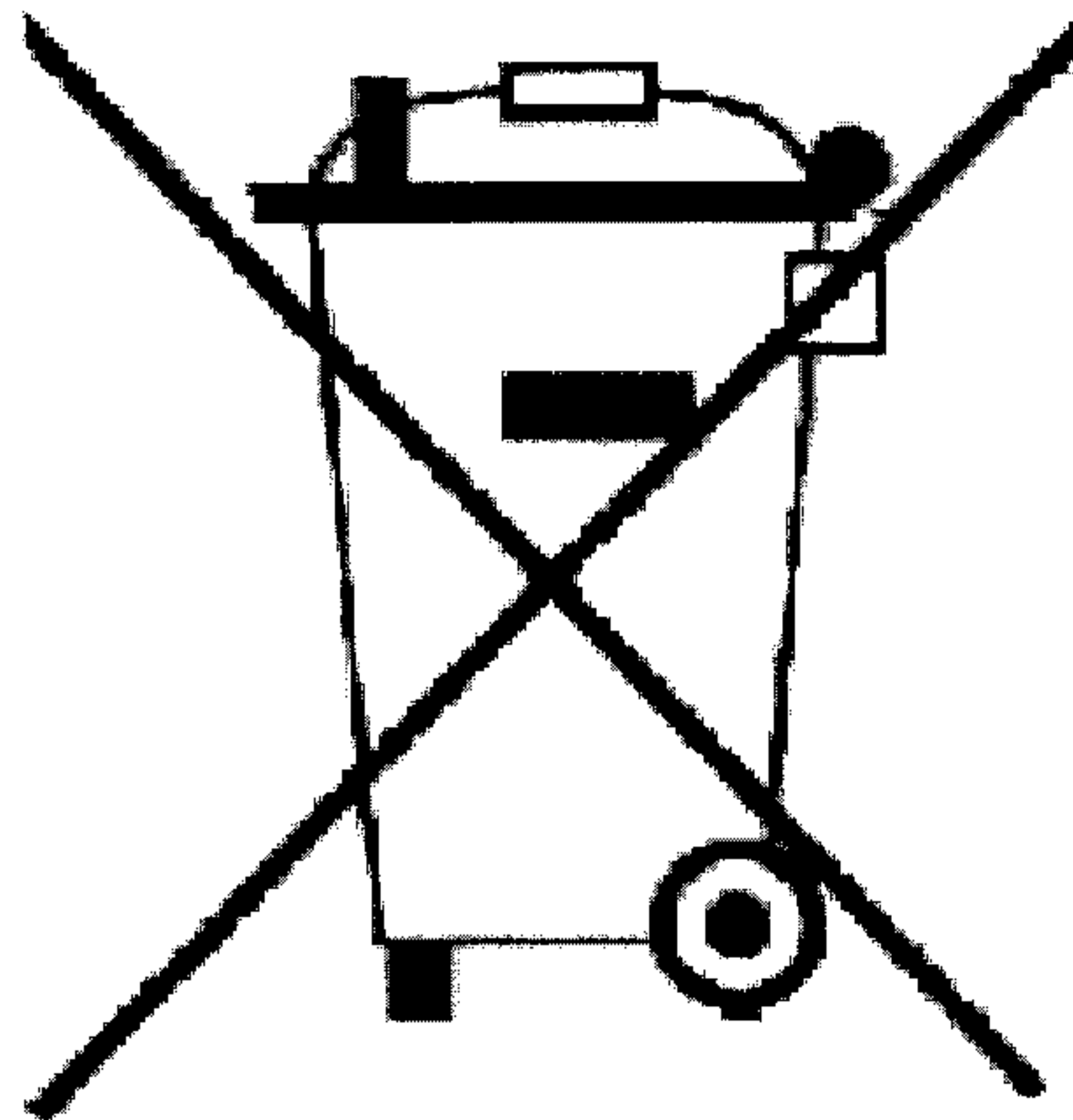
■ Even fully charged, the cutting capacity is reduced:

- A. Life of the battery has expired. Replace the battery cartridge with a new cartridge.
- B. Deterioration of the blade. Replace the blade with a new blade.

■ Tool does not operate:

- A. Battery cartridge is not charged. Charge the battery cartridge.
- B. The battery contacts are dirty. Clear the battery contacts of dirt or debris.
- C. The circuit breaker has been actuated. Push the reset pin to reset the circuit breaker back to its original position.
- D. The OFF lock is not fully depressed. Make sure it is fully depressed and reset the circuit breaker if necessary.

- Replace any worn or damaged parts immediately. Do not use parts not supplied by us.
- Contact us service representatives to request parts or for problems not shown above.
- Do NOT attempt to disassemble or repair the product.
- hydraulic tools must be serviced by a qualified technician. Contact your representative for more information.



ATTENTION!

Do not dispose of batteries or electrical appliances as unsorted municipal waste. Use separate collection facilities. If electrical appliances are disposed of in landfills or dumps, hazardous substances can leak into the groundwater and damage the public's health and well-being.*

**Contact your local government for information regarding the collection systems available.*

Limited Lifetime Warranty

- Electronic products are warranted against defects in materials and workmanship for one year.
- This warranty is subject to the following exclusions and limitations:
 1. This warranty does not cover damages to products which are not installed, operated, used and maintained in accordance with written instructions.
 2. This warranty does not cover products that have been worn out, damaged by improper storage, damaged or otherwise altered, or from disassembly or attempted disassembly by parties other than **us** or its authorized service representatives.
 3. This warranty does not cover damages caused by the use of components not manufactured or authorized by **us**, acts of God, accidents, or use in a manner for which they are not intended.
- **Our** liability in all cases is limited to, and shall not exceed, the purchase price paid. Kudos shall not be liable to any buyer for consequential or incidental damages of any kind.
- Batteries, chargers, electric motors, gas engines and cutting blades sold with Kudos products are not covered by this warranty. All electric motors and gas engines are separately warranted by the manufacturer.
- Receipt and warranty card are required for warranty services.
- If the tool is found to be defective, in our sole judgement, Kudos will either repair or replace the defective product or part.
- All revisions in warranty policy and product informations will be included in future versions of our manuals. Copies of this warranty are available from the factory upon request.

Diagram of Components

REC-50

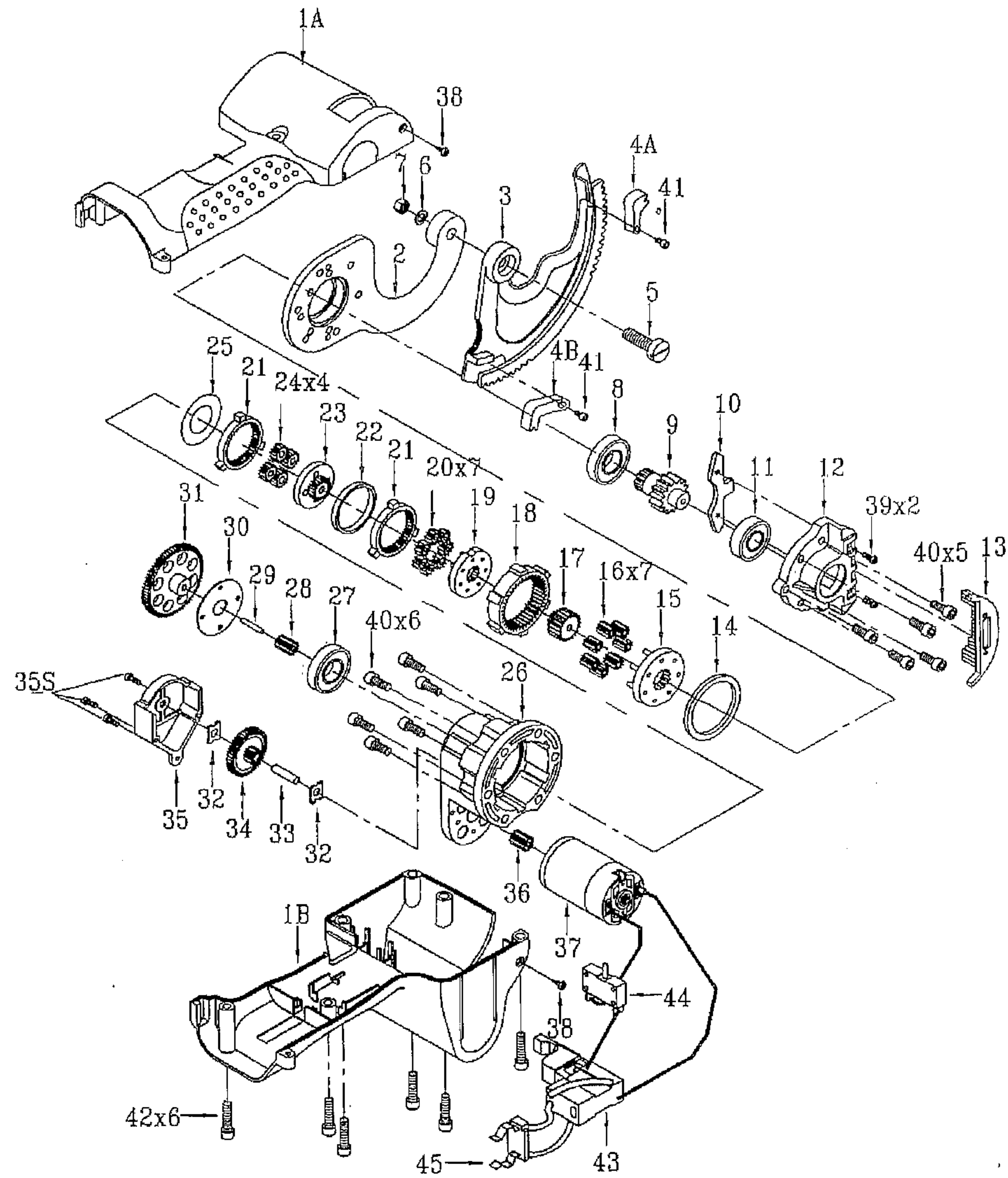


Table of Components

REC-50

No.	Part	Q'ty	No.	Part	Q'ty
1A/B	Housing	1	24	Pinion Gear	4
2	Stationary Blade	1	25	Washer	1
3	Moving Blade	1	26	Main Bracket	1
4A/B	Gear Guide	1	27	Bearing	1
5	M6 Shoulder Screw	1	28	Gear	1
6	M6 Washer	1	29	Pin	2
7	M6 Lock Nut	1	30	Gear Washer	1
8	Bearing	1	31	Gear	1
9	Pinion Gear	1	32	Centering Plate	2
10	Cutter Plate	1	33	Gear Pin	1
11	Bearing	1	34	Gear	1
12	Bearing Case	1	35	Gear Cover	1
13	Brush	1	35S	Screw	3
14	Aluminum Circlip	1	36	Motor Gear	1
15	Gear Plate	1	37	Motor	1
16	Pinion Gear	7	38	M3 x 12 Screw	1
17	Gear	1	39	M3 Screw	2
18	Inner Gear Hub	1	40	M5 x 14 Screw	11
19	Gear Plate	1	41	M3 Screw	2
20	Pinion Gear	7	42	M3 X 15 Screw	6
21	Inner Gear Hub	2	43	Switch	1
22	Plastic Circlip	1	44	Circuit Breaker	1
23	Gear Plate	1	45	Contact	1

Diagram of Components

REC-54/54AC/65/85CCP

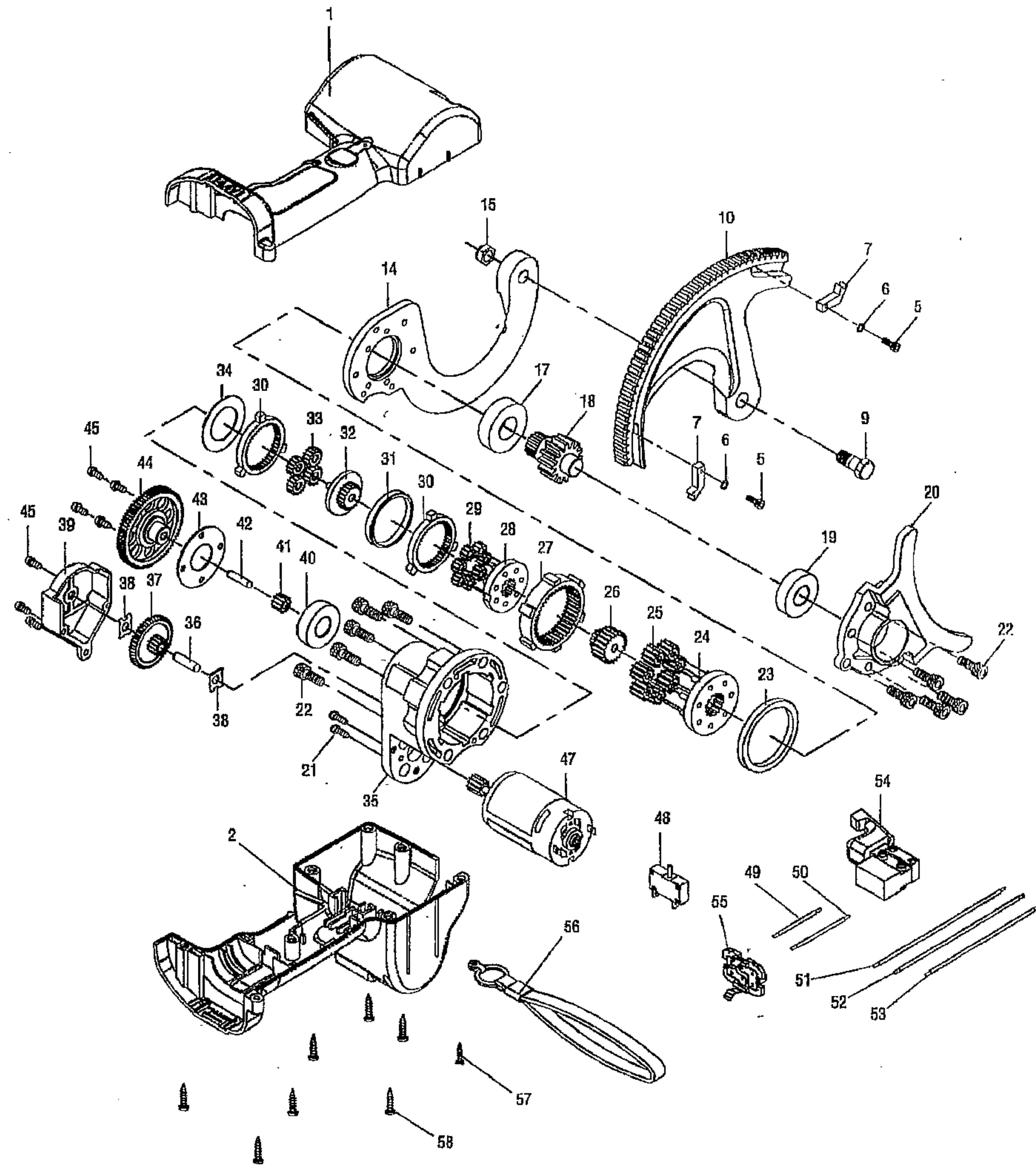


Table of Components

REC-54/54AC/65/85CCP

No.	Part	Q'ty
1~2	Housing	1
5	M3 x 6 Screw	2
6	3M Washer	2
7	Gear Guides	2
9	M10 x 1.5 Shoulder Screw	1
10	Moving Blade	1
14	Fixing Blade	1
15	M10 x 1.5 Nut	1
17~45	Planetary Gearbox	1
47	Motor with Gear	1
48	Circuit Breaker	1
49~53	Wires	1
54	Switch	1
55	Contact	2
56	Wrist Strap	1
57	M3x 15 Screw	1
58	M4 x 18 Screw	7